

NEW PRODUCT BULLETIN

Weatherproof Outlets

45° RECEPTACLE HANDY HOOD™ SERIES DR45

- Weatherproof outlet box extension hood
- Specifically designed as a quick & easy, code compliant angle adaptor to mount a single gang receptacle at a 45° angle or less, when exposed to weather, with plug inserted
- Assembly can be fitted over new or existing flush or surface outlet boxes, pedestals, etc. by simply installing the new outlet or removing the existing device outlet, screw-mounting on the gasketed angle adaptor, and re-installing the outlet and its weatherproof cover
- Machine formed galvanized steel with self drainage makes unit extremely robust, maintenance free, attractive & easy to use. Standard finish is ASA 61 Grey powder coat.
- No more troublesome while-in-use hoods are required
- CSA/UL certified assembly, weatherproof box extension device for indoor or outdoor use with plug inserted CEC 26-708 and NEC 406-8(b) (1)

NOTES

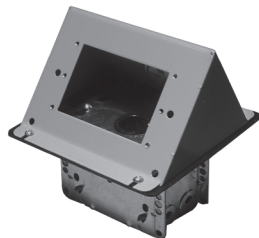
- Boxes, devices & weatherproof covers supplied by others
- Where exposed to the weather, receptacle requires weatherproof cover
- Model #'s DR45-H and DR45-V are available in a combination model # DR45-H/V Kit

Model #DR45-H

Compact horizontal receptacle design specifically for adapting weatherproof Handy Hood to *HORIZONTAL* surface mounted type FS/FSC or masonry/2104 boxes.



typical surface mount



typical flush mount

Model #DR45-RV

Compact vertical receptacle design specifically for adapting weatherproof Handy Hood to *VERTICAL* surface mounted type FS/FSC or masonry/2104 boxes.



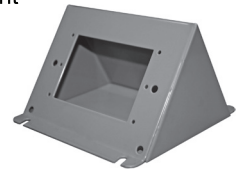
typical surface mount



typical flush mount

Model #DR45-1 (SURFACE)

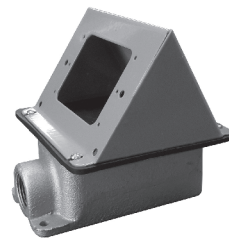
Basic angle hood & gasket *only* to mount to cabinetry, power centers etc. where hoods are required to meet CEC 26-708 & NEC 406-8(b) (1) for weatherproof robust extra duty.



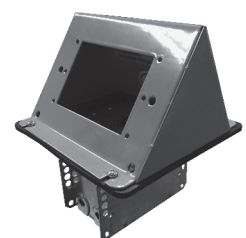
typical panel/pedestal mount

Model #DR45-V

Compact horizontal receptacle design specifically for adapting weatherproof Handy Hood to *VERTICAL* surface mounted type FS/FSC or masonry/2104 boxes.



typical surface mount



typical flush mount

Model #DR45-RV-1 (SURFACE)

Narrow retrofit angle hood & gasket only, designed to fit up to existing *VERTICAL* flush panel mount receptacles which have limited space between receptacles as in some portable power, panel mount systems, or vertical FS boxes.



typical panel/pedestal mount



Patented
A.C. Dandy
Products

For more information visit acdandy.com or call 1.800.642.2952